

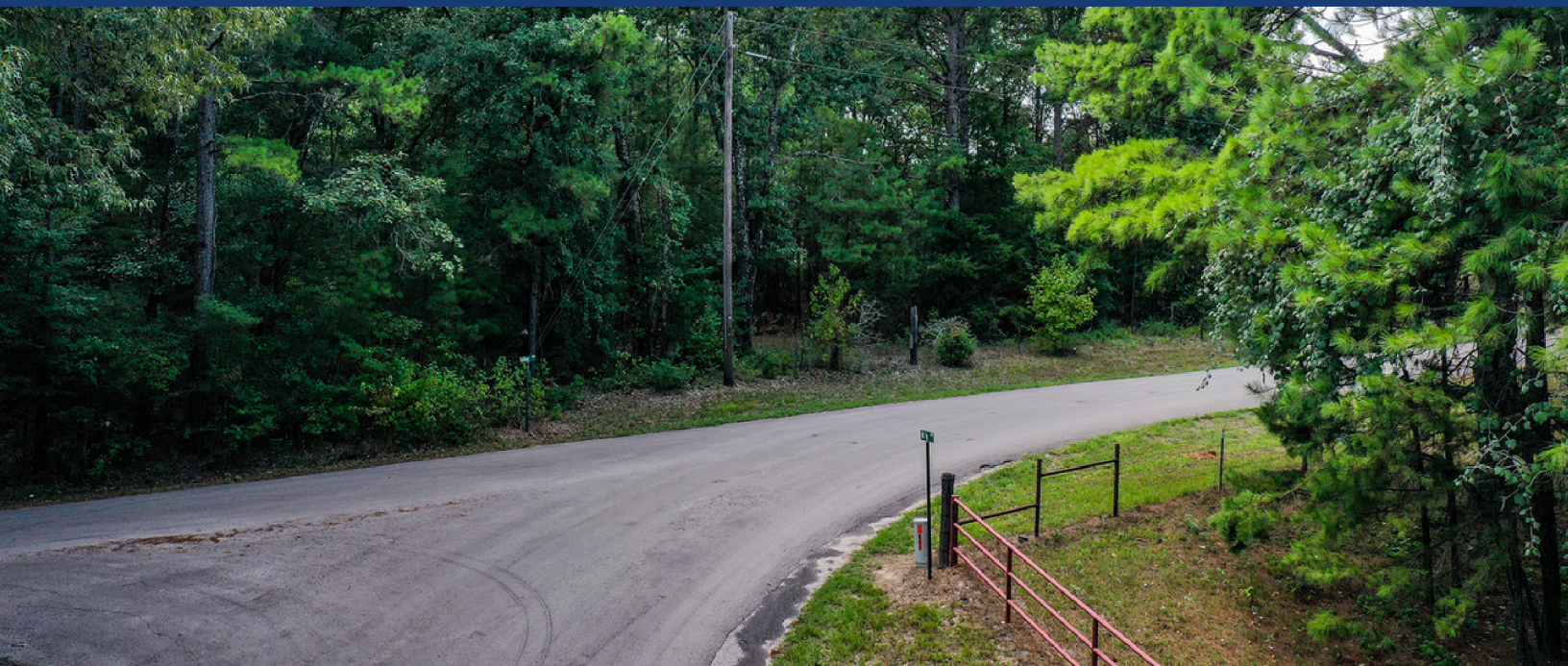
# 10 ACRES VALLEY DRIVE

HUNTSVILLE, TEXAS

***Markham***  
***Realty***

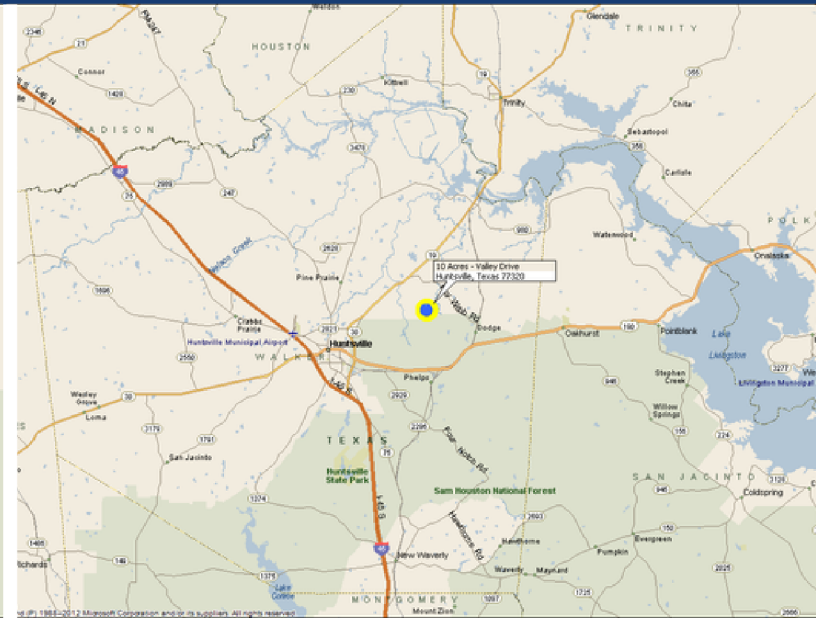
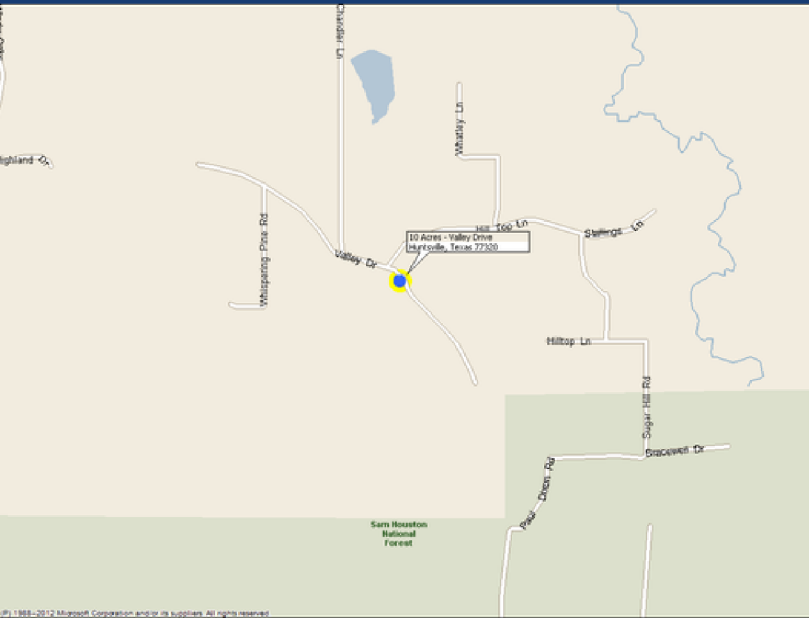


Just northeast of Huntsville lies some of the lushest land in Walker County. Wooded and loaded with large hardwood and mature pine, this 10.4 acre tract of land has so much potential. Clear out just enough for your dream home and leave the rest for the ultimate getaway of peace and quiet. The location is so convenient, being halfway between Huntsville and Riverside. Hwy 19 has easy access to I-45, where you can be in Conroe or the Woodlands in less than an hour. So come take a quick drive to the country and see why people never want to leave.

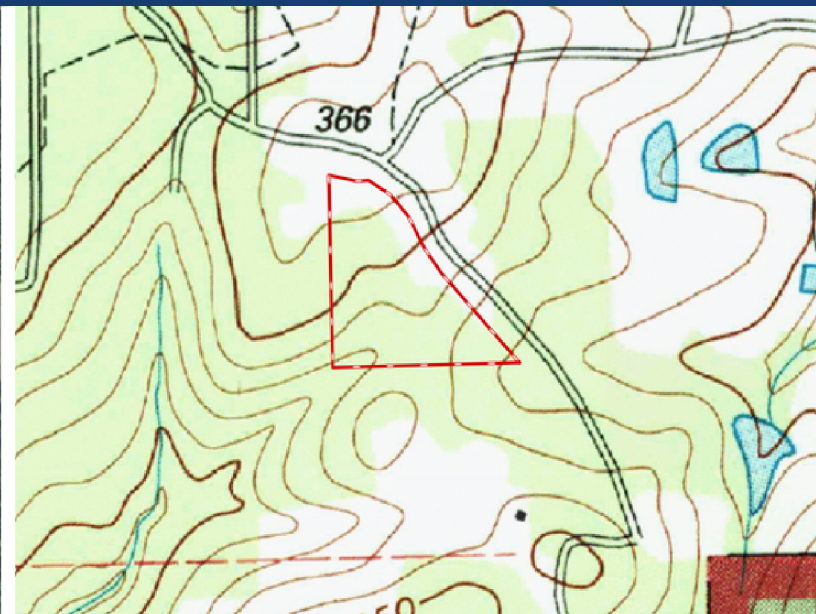




# 10 ACRES VALLEY DRIVE



From Huntsville, take Hwy 19 N to Sterling Chapel road and turn right. From there, follow to Arizona lane and turn right. Follow to Chandler Ln and turn left, then to Valley Drive and turn left, and stay right at the 'Y'. The property will be on the right, marked with a sign.



Markham Realty  
Selling Quality Texas Properties Since 1970  
contact@markhamrealty.com  
936-295-5989 | markhamrealty.com



Scan here for additional information & photos.



Information furnished is from sources deemed reliable, but is not guaranteed by Markham Realty, Inc. The offerings are subject to change in price, errors, omissions, prior sales, or withdrawal without notice. Square footage, acreage size and lot dimensions are approximate. All persons and firms named in this brochure are licensed brokers or salespersons. Markham Realty, Inc. will co-broker with any licensed Broker if Broker and/or agent accompanies his or her prospective buyer from the first (1st) showing forward.